

# FlexSwitch™

## FlexSwitch™ 2X4GT

Six-Port Ethernet Switch with Two 10G Ports and Four 10/100/1000 Ports

The FlexSwitch™ 2X4GT is a six-port Ethernet switch with four 10/100/1000 RJ-45 ports, one 10G (10GBASE-R) SFP+ or XFP fiber port, and one RJ-45 port that auto-negotiates to Gigabit or 10G (1000BASE-T/10GBASE-T). FlexSwitch 2X4GT models that support 10G SFP+ transceivers also support Gigabit transceivers for a seamless upgrade path from a Gigabit to a 10G fiber link. This compact, unmanaged switch features rate-switching and MAC learning for bridging Gigabit and 10 Gigabit Ethernet networks.

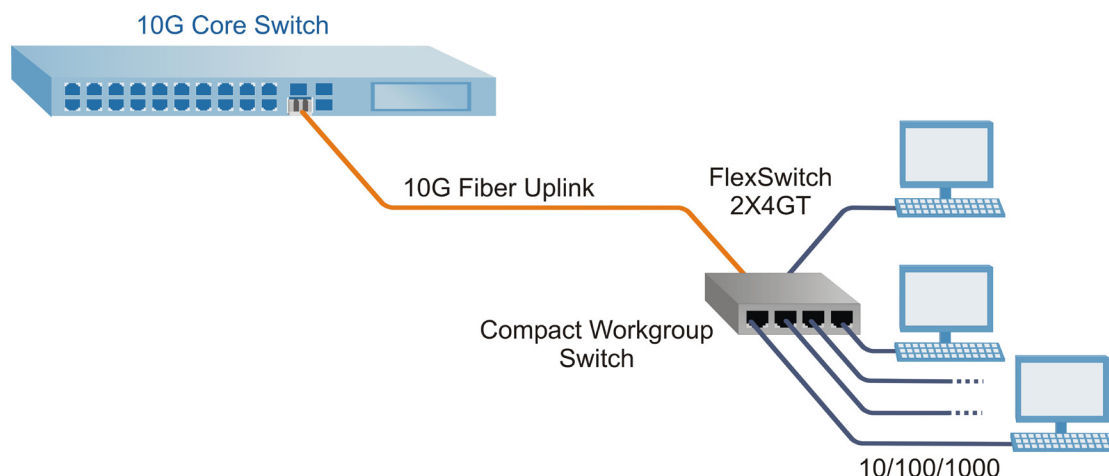
The 10G fiber port is compatible with all MSA compliant Gigabit SFP, 10G SFP+ and XFP transceivers (depending on the model), including xWDM optics, 10GBASE-LRM, and direct attach cables.

The Gigabit/10G RJ-45 port is capable of 10G rates up to 100 meters of CAT-6A (or better) cabling, and conserves energy by operating in Short Reach mode when the cabling is less than 30 meters. The four 10/100/1000 RJ-45 ports support bridging, auto-negotiation for data-rate and duplex mode, and auto MDI/MDI-X that eliminates the need for crossover cables.

## APPLICATION

The 2X4GT can connect up to five computers, storage devices, and printers within a local workstation network. The 10G Ethernet fiber uplink can connect the workgroup network to a 10G core switch which is part of the enterprise network.

The 2X4GT is compact and easy to use, and does not require user configuration for plug-and-play installation with features such as auto-negotiation and auto-crossover.



SFPs not included

## FEATURES

- 1x 1G/10G fiber port, 1x 1000BASE-T/10GBASE-T port, and 4x 10/100/1000BASE-T ports
- Supports MAC learning
- LEDs for power, port link/activity, data rates and transceiver status
- DC power input via barrel connector using external AC adapter or 2-Pin terminal connector
- 10,056 maximum frame size
- Integrated wall-mount brackets
- Can be mounted on a 1U 19" rack-mount shelf
- Commercial (0 to 50°C) and wide (-40° to 60°C) temperature ranges

# SPECIFICATIONS

<b>Description</b>	FlexSwitch 2X4GT Six-Port Ethernet Switch	
<b>Compliances</b>	UL, CE, FCC Class B <sup>1</sup> , NEBS Level 3, RoHS2 (6/6), WEEE, REACH	
<b>Frame Size</b>	Up to 10,056 bytes	
<b>Port Types</b>	Copper:	10/100/1000BASE-T (RJ-45) - Front ports 1000BASE-T (RJ-45) - Rear port 10GBASE-T (RJ-45) - Rear port
	Fiber:	1000BASE-X (SFP) 10GBASE-R (SFP+ or XFP)
<b>Cable Types</b>	Copper:	10/100/1000BASE-T: EIA/TIA 568 A/B, Category 5 and higher 10GBASE-T: EIA/TIA 568 C, Category 6A and higher
	Fiber:	Multimode: 50/125um, 62.5/125um Single-mode: 9/125um

<sup>1</sup> Requires the use of shielded twisted pair cabling

<b>Power Requirements</b>	AC Power Adapter:	100 - 240VAC/50 - 60Hz 0.228A @ 120VAC (max)
	DC Barrel Connector:	9 - 16VDC, 2.64A max 2.5mm Barrel Connector
<b>Temperature</b>	Commercial:	0 to 50° C
	Wide:	-40 to 60° C (-20°C cold start)
	Storage:	-40 to 80° C
<b>Dimensions</b>	W: 4.5" x D: 6.0" x H: 2.0", L: 114 mm x B: 152 mm x H: 51 mm	
<b>Weight</b>	1.5 lbs (0.68 kg)	
<b>Humidity</b>	5% to 95% (non-condensing)	
<b>Altitude</b>	-100m to 4,000m (operational)	
<b>MTBF (hrs)</b>	with 2-Pin Connector:	244,000
	with Power Adapter:	134,000
<b>Warranty</b>	Lifetime warranty and 24/7/365 free Technical Support	

# ORDERING INFORMATION

6 9 0 0 - x - x x

1	US AC/DC Power Adapter
2	External Universal AC/DC Power Adapter
9	2-Pin Non-isolated Terminal Connector

Model Number	Fiber Port Type	10G RJ-45 Port	Description
6900-0-0x	SFP+	0	FlexSwitch 2X4GT Standalone w/mounting brackets 1G/10G SFP+ and 4x 10/100/1000 RJ-45 ports
6900-0-1x	SFP+	1	FlexSwitch 2X4GT Standalone w/mounting brackets 1G/10G SFP+, 1x 10G and 4x 10/100/1000 RJ-45 ports
6900-1-0x	XFP	0	FlexSwitch 2X4GT Standalone w/mounting brackets 10G XFP and 4x 10/100/1000 RJ-45 ports
6900-1-1x	XFP	1	FlexSwitch 2X4GT Standalone w/mounting brackets 10G XFP, 1x 10G and 4x 10/100/1000 RJ-45 ports

Contact Omnitron for other configurations and RoHS (5/6) compliant models.

For wide temperature (-40 to 60°C), add a "W" to the end of the model number.

Accessories	
Model Number	Description
8260-0	19" rack mount shelf
8251-0	DIN-rail mounting clip

© 2017 Omnitron Systems Technology, Inc. All rights reserved. FlexSwitch is a trademark of Omnitron Systems Technology, Inc. Trademarks are owned by their respective companies. Specifications subject to change without notice.  
091-16900-001E 7/17

