

### *iConverter* 2-Module Power Chassis

The *iConverter* 2-Module Power Chassis is a compact, versatile chassis featuring a single internal universal AC or 18-60VDC power supply. The chassis provides housing for all *iConverter* multi-service platform modules.

The 2-Module Chassis features a backplane that enables sharing of Ethernet data between two installed *iConverter* modules that are equipped with Ethernet backplane ports. This enables the chassis to support a variety of networking configurations. Installing an *iConverter* copper-to-fiber module and a four-port switch module provides a fiber uplink and five 10/100 user ports. A fiber-to-fiber module can be used to provide an access point in a fiber ring, supporting four 10/100 user ports.

In Enterprise networks, the 2-Module Chassis can be used to extend a fiber network connection across a campus or to add a node to an existing fiber ring. The 2-Module Chassis provides a carrier-grade solution; combining media conversion with a managed, compact edge switch.

In Service Provider networks, installing an *iConverter* Network Interface Device (NID) plug-in module and a four-port switch module provides a securely managed Carrier Ethernet demarcation for one or more User-to-Network Interfaces (UNI). This configuration provides an MEF certified deployment supporting advanced Operation, Administration and Maintenance (OAM) features.

Equipped with an *iConverter* management module or a module with integrated management, the 2-Module Chassis provides a securely managed solution capable of supporting advanced Ethernet services for Enterprise and Service Provider metro networks. It can be remotely managed via IP-based SNMP or Telnet.

Modules with integrated management, such as the *iConverter* 10/100M2, installed in the 2-Module Chassis can also provide remote management for the configuration and monitoring of the installed modules. This provides a flexible solution for Enterprise or Service Provider applications where a securely managed edge device is required.

The *iConverter* 2-Module Chassis can be wall-mounted using the optional wall mounting kit or installed on a stable, flat surface. It can also be rack mounted using the *iConverter* 19" rack-mount shelf.



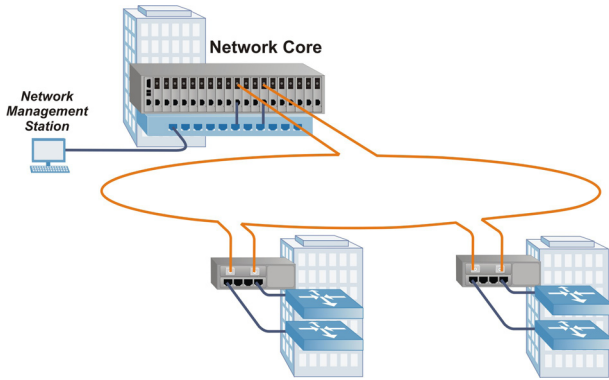
\* Modules not included

### KEY FEATURES

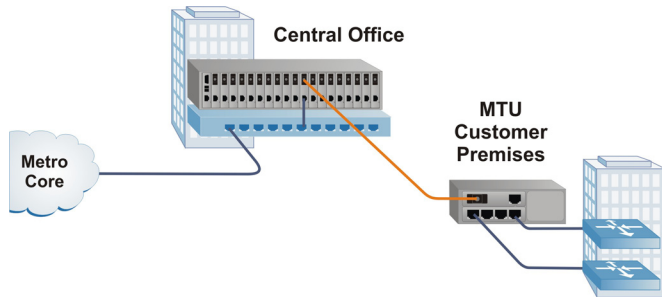
- 2-Module chassis feature an internal AC or DC power supply
- Houses all models of hot-swappable *iConverter* media converter and switch modules
- NEBS Level 3 Certification
- Ethernet backplane ports for connectivity to installed modules to support a wide variety of configurations
- Management is available with the addition of a management module to the chassis
- SNMP management via *NetOutlook*® provides real-time port and module information, remote parameter configuration and trap notification
- Optional support for wide temperature range of -40 to +60° C
- Wall-mount or tabletop options for flexible installations
- Lifetime Warranty and free 24/7 Technical Support

## APPLICATION EXAMPLES

In this Enterprise application, media converter modules are installed in a managed *iConverter* 19-Module Chassis for high-density fiber distribution from UTP switch equipment. A fiber ring connects both buildings to the Network Core. At each building, a fiber-to-fiber module is installed in a 2-Module chassis with a four-port switch module. The two modules share data via the chassis Ethernet Backplane. This configuration functions as a remotely managed departmental switch with a fiber ring to the Network Core and four 10/100 ports. The 2-Module chassis can also be utilized in a point-to-point application as illustrated in the Service Provider application.



In this Service Provider application, media converter modules are installed in a managed *iConverter* 19-Module Chassis for high-density fiber distribution from UTP switch equipment. At the Customer Premises, an *iConverter* NID module and a four-port switch module are installed in a 2-Module Chassis. A fiber link between the Central Office and the Customer Premise provides a securely managed demarcation solution supporting advanced OAM fault detection and performance monitoring.



## MANAGEMENT

Management is accomplished by using an optional *iConverter* Network Management Module (NMM2) or an *iConverter* module with integrated management, such as the 10/100M2. Management can be accessed through a menu-driven command-line interface (CLI) via Telnet or the Serial Console Port. Management can also be accessed through a SNMP-based graphical user interface (GUI) such as Omnitron's NetOutlook management software.

The intuitive *NetOutlook*® network management software provides real-time detailed port and module information as well as parameter configuration and event monitoring. *NetOutlook* can be used as a stand-alone application under Windows 98/XP/NT/2k/Vista/Windows7 or integrated with third-party SNMP management software.

Fixed parameters that can be monitored include chassis configuration, power supply health status and network traffic statistics for the modules.

In addition to all standard *iConverter* SNMP traps such as module insertion and removal, 2-Module Chassis models 8230-1, 8231-1, 8232-1, 8235-1, 8236-1 and 8238-1 support Dying Gasp traps (Power Loss Traps) in the event of loss of power. All of these events can be selectively enabled or disabled to cause SNMP traps.

# SPECIFICATIONS

Chassis Type	2-Module AC 8.5 watts	2-Module AC 16.5 watts	2-Module AC* High Airflow 16.5 watts	2-Module DC 6.6 watts	2-Module DC 16.5 watts	2-Module DC* High Airflow 16.5 watts
Model Number	8230-0	8231-0	-	8235-0	8236-0	-
Standard Dying Gasp	8230-1	8231-1	8232-1	8235-1	8236-1	8238-1
Module Capacity	2					
Power Supply Capacity	Fixed Internal					
Input Power Requirements (typical)	100 to 240VAC, 50/60Hz 0.5A @ 120VAC 2.6A @ 3.3VDC 1.5A per slot	100 to 240VAC, 50/60Hz 0.5A @ 120VAC 5A @ 3.3VDC 2.5A per slot	100 to 240VAC, 50/60Hz 0.5A @ 120VAC 5A @ 3.3VDC 2.5A per slot	+ / - 18 to 60VDC -48VDC @ 1.0A 2A @ 3.3VDC 1.5A per slot	+ / - 18 to 60VDC -48VDC @ 2.0A 5A @ 3.3VDC 2.5A per slot	+ / - 18 to 60VDC -48VDC @ 2.0A 5A @ 3.3VDC 2.5A per slot
Dimensions	W:6.7" x D:5.51" x H:1.87"					
Weight	2.5 lb					
Compliance	UL, CE, FCC Class A, NEBS Level 3					
Temperature	Standard: 0 to 50° C Wide: -40 to 60° C Storage: -40 to 80° C					
Humidity	5 to 95% (non-condensing)					
Altitude	- 100m to 4000m					
MTBF (hrs)	151,000	413,000	50,000	329,000	538,000	50,000

\* Required for *iConverter* XG+ models. Register at [Omnitron-Systems.com](http://Omnitron-Systems.com) to download the *iConverter* XG+ Usage Guide.

# ORDERING INFORMATION

Configuration	2-Module AC 8.5 watts	2-Module AC 16.5 watts	2-Module AC High Airflow 16.5 watts	2-Module DC 6.6 watts	2-Module DC 16.5 watts	2-Module DC High Airflow 16.5 watts
2-Module Chassis	8230-0	8231-0	-	8235-0	8236-0	-
2-Module Chassis with Dying Gasp Support	8230-1	8231-1	8232-1	8235-1	8236-1	8238-1
Wall-Mount Hardware Kit	8249-0					
19" Rack-Mount Shelf	8260-0					
Blank Module Panel	8090-0					
For wide temperature (-40 to 60° C), add a "W" to the end of the model number. Consult factory for extended temperature (-40 to +75° C) models.						

©2011 Omnitron Systems Technology, Inc. All rights reserved. *iConverter* and *NetOutlook* are registered trademarks of Omnitron Systems Technology, Inc. Specifications subject to change without notice.

091-18230-0011

7/11

**OST** Omnitron Systems  
Technology, Inc.

800-675-8410 • 949-250-6510 • [www.omnitron-systems.com](http://www.omnitron-systems.com) • [info@omnitron-systems.com](mailto:info@omnitron-systems.com) • 140 Technology Dr., Irvine, CA 92618