

iConverter 4Tx VT 4-Port 10/100BASE-TX Managed Ethernet Switch

The *iConverter* 4Tx VT 10/100 managed Ethernet switch module is a member of the *iConverter* product family. It provides a compact 4-Port 10/100 Ethernet switch that is expandable across the *iConverter* 19-Module, 5-Module and 2-Module chassis backplanes, as well as being supported as a stand-alone switch with the *iConverter* 1-Module Chassis.

The *iConverter* 4Tx VT supports the IEEE 802.1Q and 802.1p standards. It supports the 802.1Q VLAN packet tagging and untagging for segregating data in Enterprise networks, and enabling secure separation of Service Provider network management and customer data to improve security and intrusion protection.

The 802.1Q Q-in-Q stacked tags enable Service Providers to offer to their customers secure Ethernet Virtual Private Line services which isolates each customer's data traffic, as well as the Service Provider's management traffic.

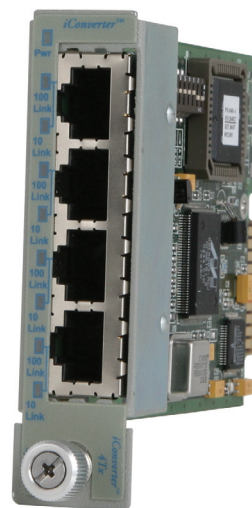
The 4Tx VT supports the 802.1p prioritization for the delivery of Quality of Service (QoS) to real-time applications such as voice or video over Ethernet.

The *iConverter* 4Tx VT features Bandwidth and Port Access Controls. On a per port basis, the upstream and downstream traffic can be independently controlled by selecting from eight levels of bandwidth setting. The Port Access Control enables the network administrator to easily control and deny individual port access while maintaining port configuration for easy port re-enabling.

The ports feature 10/100Mbps, Half/Full-Duplex, and auto-negotiation with both hardware and software controls. Hardware control is available for two ports while all four ports are under software control for these features. RJ-45 crossover support eliminates need for a crossover cable and facilitates connectivity to different types of network equipment. All four ports support an automatic crossover detection mode.

Two Ethernet backplane ports provide connectivity to adjacent modules for network expansion and for providing additional 10/100 UTP ports for *iConverter* modular NIDs.

The *iConverter* 4Tx VT supports reporting of MIB statistics. Statistics are available for 32 variables per port, reporting a wide range of real-time packet statistics to provide performance and operational monitoring.



KEY FEATURES

- 4-Port 10BASE-T or 100BASE-TX Ethernet switch module
- Supports IEEE 802.1Q Tag VLAN, Q-in-Q Multi-tagging and Port VLAN
- Supports IEEE 802.1p Prioritization QoS
- Per port MIB Statistics reporting of 32 variables
- Individual Port Bandwidth and Port Access Control
- Flash-upgradable memory
- Multiple 4Tx VT modules can be installed to expand the port concentration in a single chassis
- UTP port supports auto-crossover, with 10/100 and Half or Full-Duplex auto-negotiation or forced setting
- Backplane Ethernet ports for connectivity to adjacent modules
- Management is available with the addition of a management module to the chassis
- SNMP management via *NetOutlook*® provides real-time port and module information, remote parameter configuration and trap notification
- Conforms to IEEE 802.3, 10BASE-T and 100BASE-TX specifications
- Lifetime Warranty and free 24/7 Technical Support

MANAGEMENT

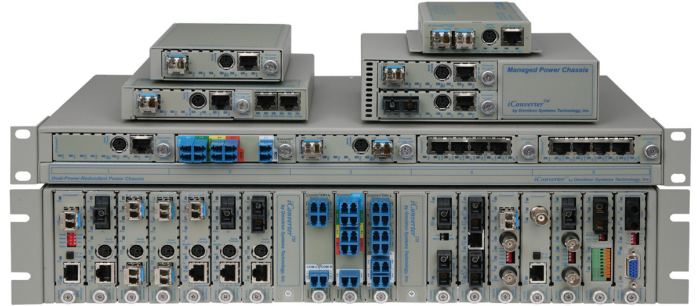
Management is accomplished by using a Network Management Module (NMM2) or a media converter with integrated management (such as an *iConverter* 10/100M2) that provides monitoring, remote configuration and trap notification. The management module can be accessed via SNMP, Telnet and via a serial port. The SNMP-based management is accomplished via Omnitron's intuitive, graphic-oriented *NetOutlook* management software or third party SNMP management software. Management via the Telnet and the serial interfaces have an easy-to-use, menu-driven interface.

Some of the real-time 4Tx VT parameters that can be monitored include link and data receive status. Other parameters include module type and model, hardware and software revisions, serial numbers and a user-defined identifier.

The user can override the 4Tx VT module's physical switch settings by using SNMP or Telnet to remotely configure switch-selectable parameters such as auto-negotiation, Half or Full-Duplex, and Backplane Selection.

In addition to all standard *iConverter* SNMP traps such as module insertion and removal, the 4Tx VT modules can generate traps on port state changes including link-up and link-down. Trap monitoring of specific events can be selectively enabled or disabled by the network administrator.

The *iConverter* Multi-Service Platform consists of Network Interface Devices, T1/E1 multiplexers, CWDM multiplexers and managed media converters that combine to deliver Carrier Ethernet and TDM services over fiber or CWDM wavelengths. This flexible architecture supports a wide variety of configurations for scalable and reliable fiber connectivity in Service Provider and Enterprise networks.



ORDERING INFORMATION

Model Type	Connectors	Distance
8481-4	RJ-45 x 4	100m
For wide temperature (-40 to 60° C) modules, add a "W" to the end of the model number. Consult factory for other configurations and extended temperature (-40 to +75° C) modules.		

SPECIFICATIONS

Model Type	4Tx VT
Protocols	10BASE-T, 100BASE-TX
UTP Connectors	RJ-45
Controls	BP Enable, Auto/Man, 10/100, FDX/HDX
LED Displays	Power, 10/100 UTP Link
Dimensions	W:0.85" x D:4.5" x H:2.8"
Weight	8 oz.
Compliance	UL, CE, FCC Class A
Power Requirement	0.7A @ 3.3VDC (typical)
Temperature	Standard: 0 to 50° C Wide: -40 to 60° C Storage: -40 to 80° C
Humidity	5 to 95% (non-condensing)
Altitude	-100m to 4000m
MTBF (hrs)	740,000

© 2010 Omnitron Systems Technology, Inc. All rights reserved. *iConverter* and *NetOutlook* are Registered Trademarks of Omnitron Systems Technology, Inc. Trademarks are owned by their respective companies. Specifications are subject to change without notice. 091-18481-001C 9/10