

FlexPoint

FlexPoint™ 10FL/T 10BASE-FL to 10BASE-T Media Converter

The FlexPoint 10FL/T is a 10BASE-FL fiber to 10BASE-T UTP media converter that provides reliable and cost-effective network connectivity and fiber extension.

The UTP port auto-negotiates the duplex mode of the attached device for plug-and-play installations. The port detects and corrects wiring polarity reversals, and features a crossover switch that eliminates the need for a crossover cable and facilitates connectivity to network equipment such as hubs, switches and workstations.

The fiber port operates at 850nm, 1310nm or 1550nm, and features ST, SC or MT-RJ connectors. Multimode fiber models support distances of up to 5km, and single-mode fiber models support distances of up to 120km.

The FlexPoint 10FL/T supports Link Propagate, which is a fault detection tool that provides a local indication of a remote link loss by disabling the port and propagating the loss of link from one port to the other.

The FlexPoint 10FL/T features descriptions of the LED indicators on the label for easy in-the-field installation and maintenance. The LEDs report the availability of power, port activity and link status, speed and duplex modes.

FlexPoint modules can be mounted utilizing optional wall-mounting hardware or with DIN-rail mounting brackets. They can also be rack-mounted in a 5-Module shelf or in a high-density 14-Module, power-redundant Powered Chassis.

FlexPoint modules installed in the 5-Module shelf or used as standalone devices can be powered by an external AC to DC power adapter, or through the 5VDC chassis connector. Standalone modules can also be powered by attaching an external DC power supply (18-60VDC). When used in the 14-Module power-redundant Powered Chassis with any combination of AC and DC power supplies, the installed modules are powered via the 5VDC chassis connector.

The wide variety of FlexPoint mounting and power options provide flexible upgrade paths as network requirements change and grow.

Simple, dependable and flexible. For over a decade, FlexPoint media converters have been providing reliable fiber connectivity in Enterprise and mission-critical networks around the world.



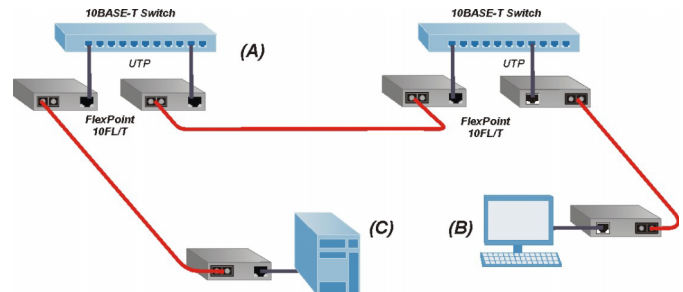
- The FlexPoint 10FL/T is a 10BASE-FL fiber to 10BASE-T UTP media converter
- UTP port automatically supports Full or Half-Duplex
- Features a crossover switch for easy connection to hubs, switches or workstations
- Extends network distances up to 120km
- Supports Link Propagate for the remote detection of link faults
- Supports most network interfaces with a wide variety of cable and connector types
- Labeled status LEDs for quick and easy installation
- Wall-mount or rack-mount on a 5-Module shelf or in a 14-Module power-redundant FlexPoint Powered Chassis
- Completely software independent with no installation of drivers required
- Peace-of-mind reliability backed by a lifetime warranty and free 24/7 technical support

SPECIFICATIONS

Model Type	10FL/T															
Protocols	IEEE 802.3, 10BASE-T, 10BASE-FL															
UTP Cable	EIA/TIA 568A/B, Category 5 and higher															
Fiber Cables	Multimode: 50/125, 62.5/125, 100/140µm Single-mode: 9/125µm															
UTP Connectors	RJ-45															
Fiber Connectors	SC, ST, MT-RJ															
Switches	User Selectable UTP Crossover: Straight Through / Crossed															
LED Displays	Power: Yellow LED = Power Applied Fiber Link: Green LED = Device Detected Fiber Receive: Green LED = Data Received UTP Link: Green LED = Device Present UTP Receive: Green LED = Data Received UTP Polarity: Yellow LED = Polarity Corrected															
Dimensions	W: 3.0" x D: 4.0" x H: 1.0"															
Weight	6 oz. (without power adapter)															
Compliance	UL, CE, FCC Class A															
Power Requirements	<table><thead><tr><th></th><th>Barrel Connector</th><th>Molex Connector</th></tr></thead><tbody><tr><td>Nominal Voltage:</td><td>9VDC</td><td>5VDC</td></tr><tr><td>Voltage Range:</td><td>8.0 to 15.0VDC</td><td>4.75 to 5.25VDC</td></tr><tr><td>Power Nominal:</td><td>0.2A @ 9VDC</td><td>0.5A @ 5VDC</td></tr><tr><td>Maximum Power:</td><td>1A @ 9VDC</td><td>0.75A @ 5VDC</td></tr></tbody></table>		Barrel Connector	Molex Connector	Nominal Voltage:	9VDC	5VDC	Voltage Range:	8.0 to 15.0VDC	4.75 to 5.25VDC	Power Nominal:	0.2A @ 9VDC	0.5A @ 5VDC	Maximum Power:	1A @ 9VDC	0.75A @ 5VDC
	Barrel Connector	Molex Connector														
Nominal Voltage:	9VDC	5VDC														
Voltage Range:	8.0 to 15.0VDC	4.75 to 5.25VDC														
Power Nominal:	0.2A @ 9VDC	0.5A @ 5VDC														
Maximum Power:	1A @ 9VDC	0.75A @ 5VDC														
Temperature	0 to 50° C															
Humidity	5 to 95% (non-condensing)															
Altitude	-100m to 4000m															
MTBF (Hours)	Module without Power Adapter: 1,700,000 Module with Power Adapter -1: 250,000 Module with Power Adapter -2: 100,000															

APPLICATION EXAMPLES

A pair of FlexPoint 10FL/T media converters are used to connect two 10BASE-T switches (A) via fiber. A workstation (B) and file server (C) are connected to the network using pairs of FlexPoint 10FL/T media converters. The converters are configured for Full-Duplex operation. In each case, multimode or single-mode fiber can be used, and fiber links can be extended up to 120km using single-mode fiber.



ORDERING INFORMATION

Fiber Type	Distance	Connector Type			Tx / Rx Wavelength [nm]	Min. Tx Power [dBm]	Max. Tx Power [dBm]	Min. Rx Sense [dBm]	Max. Rx Power [dBm]	Optical Power Budget
		ST	SC	MT-RJ						
MM	2km	4300-x	4303-x	-	850	-21	-11	-31	-11	10
MM	5km	4302-x	-	4305-x	1310	-21	-11	-31	-11	10
SM	30km	4301-x	-	4308-x	1310	-15	-8	-31	-8	16
SM	60km	4304-x	-	-	1310	-5	0	-31	-3*	26
SM	85km	-	4306-x	-	1550	-7	0	-28	-3*	21
SM	120km	-	4307-x	-	1550	-5	0	-31	-3*	26

Power Adapter Kits (-x): -0 = No power adapter included, -1 = 110-120 VAC/60 Hz (US plug), -2 = 100-240 VAC/50-60 Hz (IEC plug, no power cord)
 For other power and fiber configurations, please consult the factory. *When using these models in pairs, a minimum attenuation of 3dB is required.

Trademarks are owned by their respective companies. FlexPoint is a trademark of Omnitron Systems Technology, Inc. Specifications subject to change without notice. ©1998-2007 Omnitron Systems Technology, Inc.

091-04300-004F 12/07

